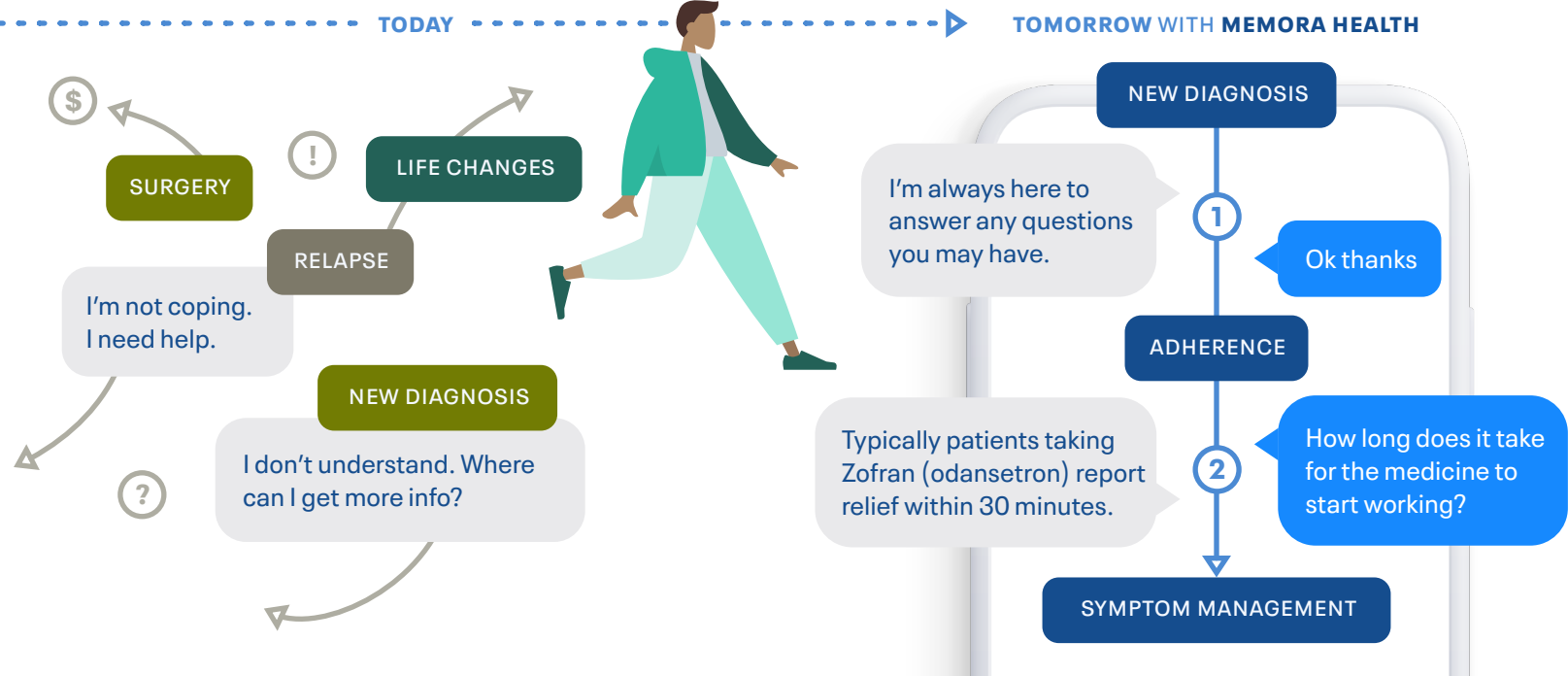


# Meet Patients Where They Are

Make complex care journeys **simple** for patients and clinicians



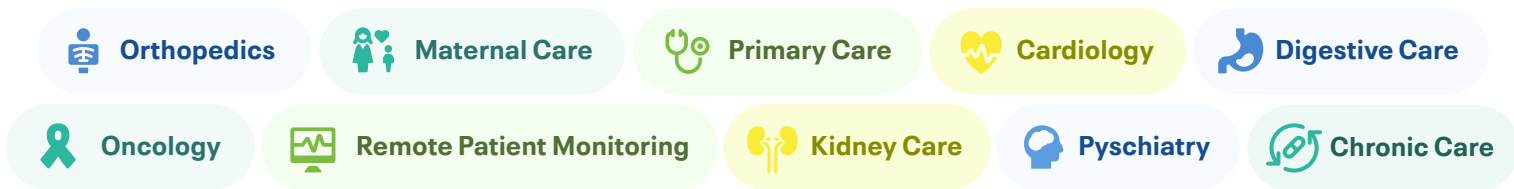
## Our Care Solution

**Automated** enrollment with engagement that mirrors patient's care plan

**Adherence** tracking, survey administration, and symptom management

**Alert** care team members about patient concerns, and reduce scheduling delays

## Clinical Workflows Using Memora Health



## Outcomes with Memora Health

IN USE AT **55+ HEALTHCARE ORGANIZATIONS**



Edward-Elmhurst HEALTHCARE

**\$670**

NEW REVENUE PER PATIENT

**94%**

RATE OF PATIENT ENGAGEMENT

**25**

DAILY HOURS SAVED PER FTE

**92%**

RATE OF PATIENT ACTIVATION

To **book a demo**, contact us today: [info@memorahealth.com](mailto:info@memorahealth.com) (480) 335-7348